

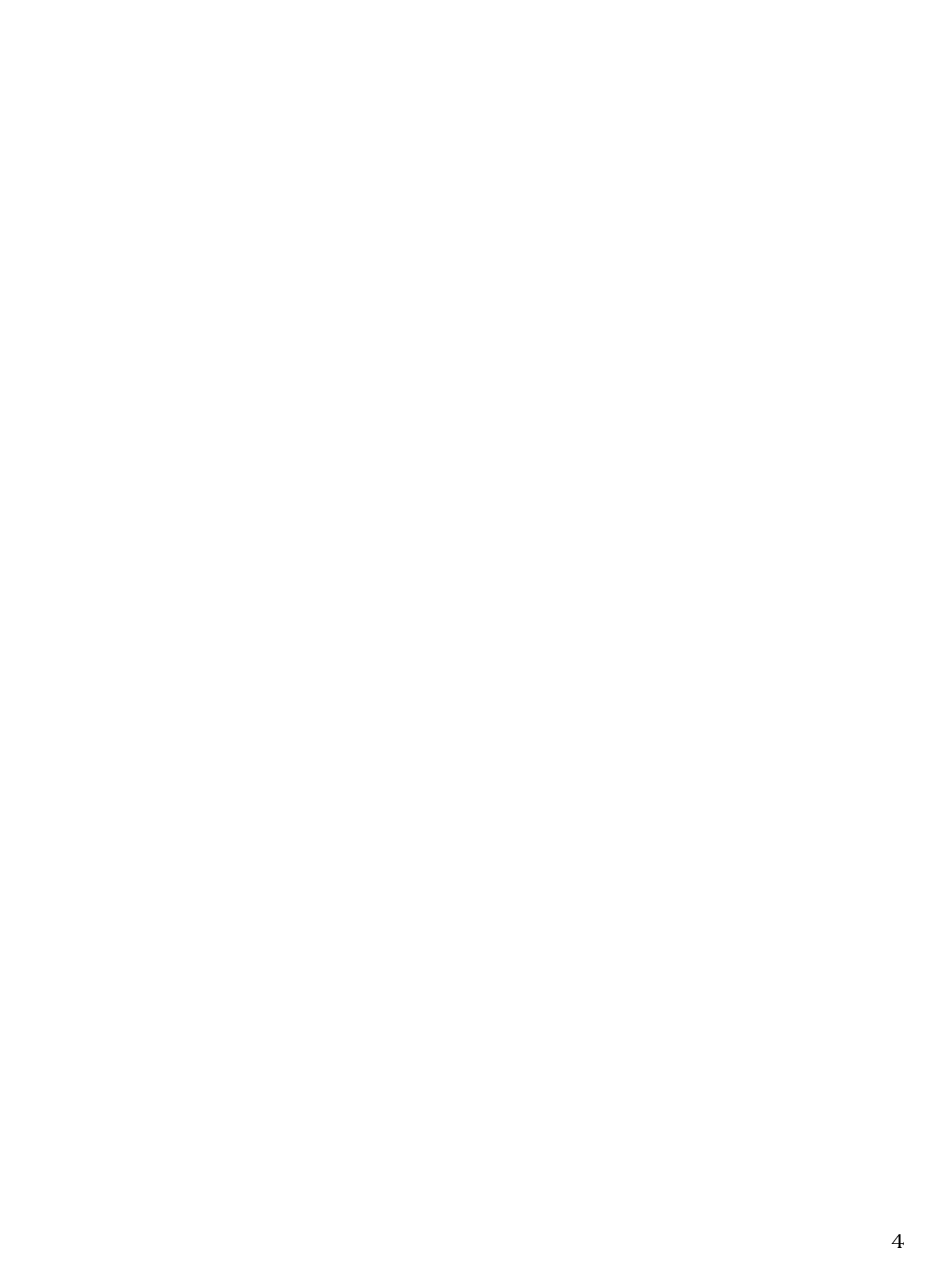
CASA LA SCALA

1957—1958



COLLECTION 2020

DEDAR
MILANO



Built between 1957 and 1958 in a small Italian town on Lake Garda, Casa La Scala is a Brutalist masterwork by Vittoriano Viganò – the Milanese architect who merged the legacy of the Modern Movement and the influence of Italian Rationalism into a personal, pioneering language. Designed for André Bloc – his friend and founder of the magazine L'ARCHITECTURE D'AUJOURD'HUI –, it is here that the new collection is revealed. In a perfectly balanced contrast between béton brut rawness and sliding-glass door lightness, the vibrant alternation of materials is the connective thread among architecture, nature and textiles.

The new woven felts and natural textures dialogue with the vigour of concrete slabs and steel columns, which symbolize man's ability to transform raw materials into pure poetry. In this remarkable location, the abstract forms of the new jacquard fabrics relive in the glass and metal reflections of windowpanes. An almost imperceptible transition between interior and exterior takes place, enabling the water and evergreen trees to enter the building, while the wide curtains, recalling natural colours or geometrical waves, open up onto the lake view from the verge of a steep slope.



“Whenever I happened to be engaged in something small, I tried to make its content as generic as possible, but when the opposite happened, I tried to focus on the details. [...] If you look at a large object, pay attention to the small things it contains; if, on the other hand, you are observing something small, note the way in which it exists in a larger space.”

“Quando mi è capitato di fare il piccolo ho cercato di caricarlo il più possibile di generale, quando è avvenuto il contrario ho cercato di recuperare il piccolo. [...] Se guardi una cosa grande, stai attento a come le cose piccole vi stanno dentro; se viceversa guardi una cosa piccola, stai attento a come essa vive in uno spazio più grande.”

Vittoriano Viganò













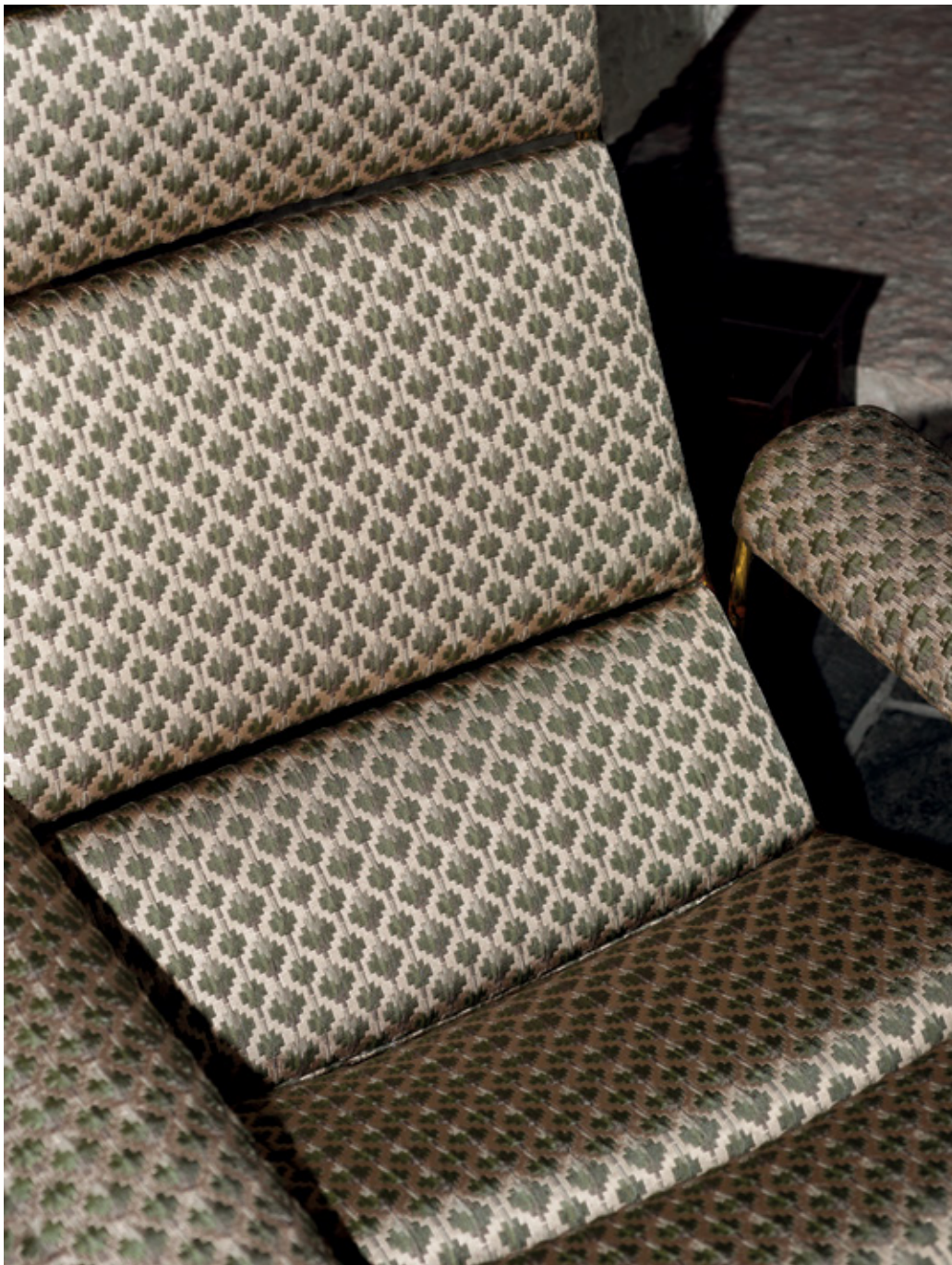


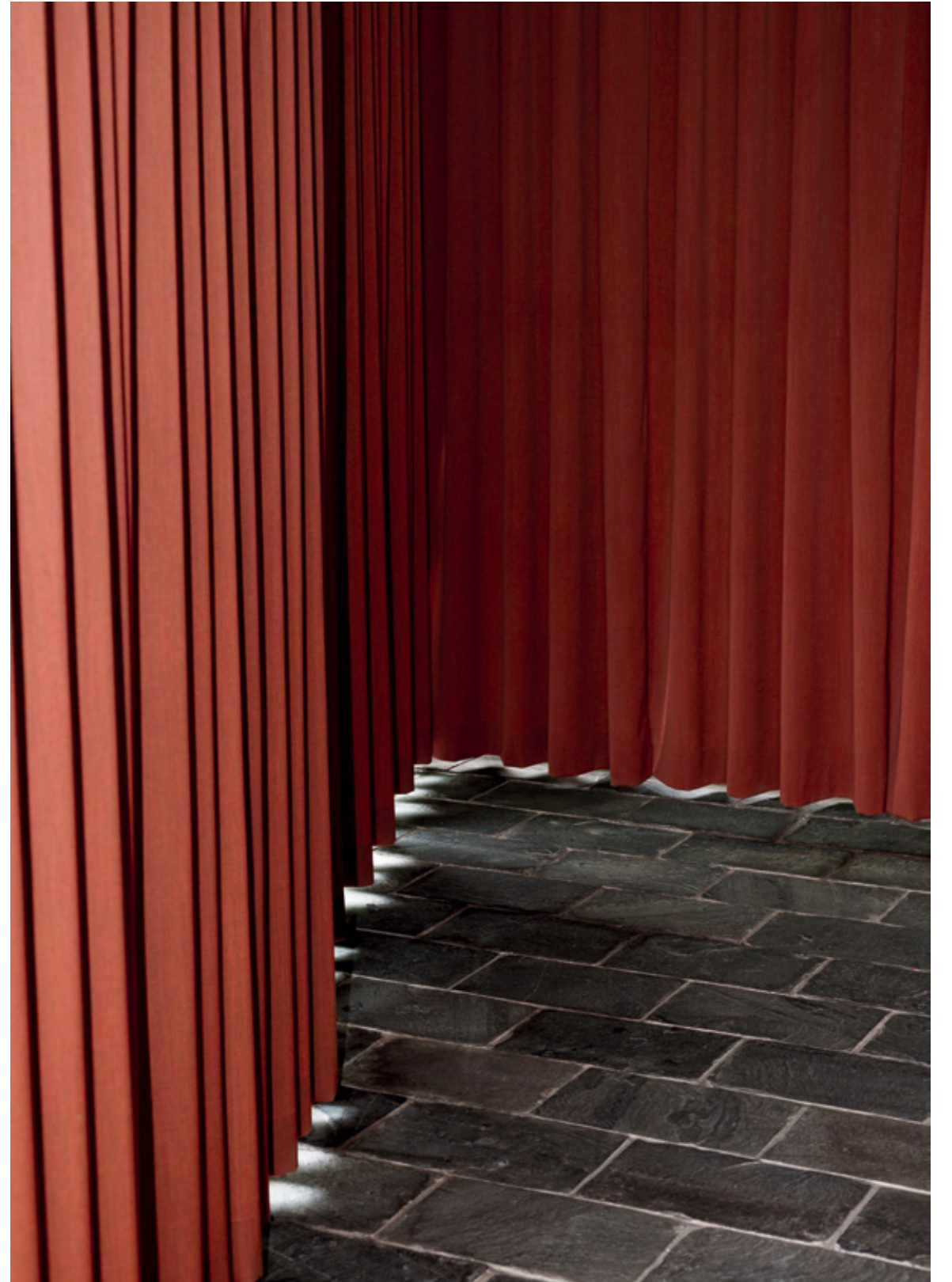


“Exposed reinforced concrete. Its use is justified also in relation to the counterpoint of surrounding color. The entire indoor and outdoor environment is played out in a few basic colours: the natural colour of the concrete which practically constitutes the connective thread; blue marine, off-white and brick red.”

“Cemento armato a vista. Il suo impiego si giustifica anche in rapporto al contrappunto del colore ambientale. Tutto l’ambiente interno ed esterno verte su pochi colori base: il colore naturale del cemento che costituisce praticamente il filo conduttore; il colore bleu marine, il colore bianco sporco, il colore rosso mattone.”

Vittoriano Viganò















“Any material endowed with its own authenticity, whether natural or deriving from building technology, has an undeniably outstanding beauty. [...] And each one carries its own prerogatives, all waiting to be discovered [...] from the very first day.”

“Ogni materiale che abbia una sua autenticità, o naturale o tecnologico-costruttiva, ha una bellezza sostanziale indubbia. [...] E ognuno è portatore di prerogative tutte sue proprie, tutte da scoprire [...] dal primo giorno.”

Vittoriano Viganò















Index

1-4

5

Curtain *Buonfresco*, textured wool satin, col. 12 Kiwi.

COMPLETE RANGE: 14 COLOURS

Tenda *Buonfresco*, raso di lana materico, col. 12 Kiwi.

GAMMA COMPLETA: 14 COLORI

8–9

Armchairs *Chapeau*, sartorial wool woven felt, col. 7 Mirtillo.

COMPLETE RANGE: 17 COLOURS

Poltrone *Chapeau*, panno di lana sartoriale, col. 7 Mirtillo.

GAMMA COMPLETA: 17 COLORI

Armchairs Courtesy of Nilufar Gallery

13

Curtain *Fandango*, contemporany jacquard with lively geometries, col. 2 Jaune d’Or.

COMPLETE RANGE: 5 COLOURS

Tenda *Fandango*, jacquard contemporaneo a geometrie vivaci, col. 2 Jaune d’Or.

GAMMA COMPLETA: 5 COLORI

14

Armchairs *Atelier Moderne*, shot linen canvas, col. 3 Rosa Petalo, col. 1 Fondente.

COMPLETE RANGE: 13 COLOURS

Poltrone *Atelier Moderne*, tela di lino fiammata, col. 3 Rosa Petalo, col. 1 Fondente.

GAMMA COMPLETA: 13 COLORI

16–17

Sofa *Neon*, couture matelassé fabric, col. 6 Carambole.

COMPLETE RANGE: 9 COLOURS

Curtain *Fandango*, contemporary jacquard with lively geometries, col. 2 Jaune d’Or.

COMPLETE RANGE: 5 COLOURS

Divano *Neon*, tessuto matelassé couture, col. 6 Carambole.

GAMMA COMPLETA: 9 COLORI

Tenda *Fandango*, jacquard contemporaneo a geometrie vivaci, col. 2 Jaune d’Or.

GAMMA COMPLETA: 5 COLORI

20

Curtain *Babelia*, abstract landscape on jacquard, col. 4 Vision Chlorophylle.

COMPLETE RANGE: 4 COLOURS

Tenda *Babelia*, paesaggio astratto su jacquard, col. 4 Vision Chlorophylle.

GAMMA COMPLETA: 4 COLORI

23

Wardrobe *Rovere*, textured jacquard, col. 1 Avorio.

COMPLETE RANGE: 2 COLOURS

Armadio *Rovere*, jacquard materico, col. 1 Avorio.

GAMMA COMPLETA: 2 COLORI

24

Armchair *Flimflam*, eclectic flame pattern jacquard, col. 3 Îles Caïmans.

COMPLETE RANGE: 4 COLOURS

Poltrona *Flimflam*, eclettico jacquard fiammato, col. 3 Îles Caïmans. Gamma

COMPLETA: 4 COLORI

Saratoga Sofa, Elena e Massimo Vignelli, production Poltronova

28–29 Armchair *Coriandoli*, lively matelassé fabric, col. 5 Bronzo.

COMPLETE RANGE: 6 COLOURS

Armchairs *A soft place*, ultra-soft long-pile velvet, col. 3 Grey Husky, col. 1 Teddy.

COMPLETE RANGE: 4 COLOURS

Poltrona *Coriandoli*, vivace tessuto matelassé, col. 5 Bronzo.

GAMMA COMPLETA: 6 COLORI

Poltrone *A soft place*, morbido velluto a pelo alto, col. 3 Grey Husky, col. 1 Teddy.

GAMMA COMPLETA: 4 COLORI

31

Curtain *No Excuses*, extra-wide wool woven felt, col. 4 Zucca.

COMPLETE RANGE: 11 COLOURS

Tenda *No Excuses*, panno di lana in grande altezza, col. 4 Zucca.

GAMMA COMPLETA: 11 COLORI

32–33

Curtain *Be Bop A Lula*, lively jacquard with palm trees, col. 7 Terra di Siena.

COMPLETE RANGE: 11 COLOURS

Armchair *Saxophone*, sartorial wool chevron, col. 3 Loden.

COMPLETE RANGE: 3 COLOURS

Tenda *Be Bop A Lula*, jacquard vivace con fantasia a palme, col. 7 Terra di Siena.

GAMMA COMPLETA: 11 COLORI

Poltrona *Saxophone*, chevron di lana sartoriale, col. 3 Loden.

GAMMA COMPLETA: 3 COLORI

Ondine Armchair designed by Jorge Zalszupin, re-edited by ETEL and licensed by Zalszupin.

35

Curtain *Berbère*, textured wool canvas, col. 1 Brebis.

COMPLETE RANGE: 2 COLOURS

Tenda *Berbère*, tela di lana materica, col. 1 Brebis.

GAMMA COMPLETA: 2 COLORI

36–37

Curtain *Untitled*, textured jacquard with abstract pattern, col. 1 Black Silver over Ivory.

COMPLETE RANGE: 3 COLOURS

Armchair *Xylophone*, bulky wool canvas, col. 1 Polar White.

COMPLETE RANGE: 3 COLOURS

Tenda *Untitled*, jacquard materico con disegno astratto, col. 1 Black Silver over Ivory.

GAMMA COMPLETA: 3 COLORI

Poltrona *Xylophone*, corposa tela di lana, col. 1 Polar White.

GAMMA COMPLETA: 3 COLORI

Alfa Lounge Chair designed by Oscar Niemeyer,reedited by ETEL and licensed by Oscar Niemeyer Foundation.

39

Armchair *Babelia*, abstract landscape on jacquard, col. 1 Éclipse de Lune.

COMPLETE RANGE: 4 COLOURS

Poltrona *Babelia*, paesaggio astratto su jacquard, col. 1 Éclipse de Lune.

GAMMA COMPLETA: 4 COLORI

40

Cushion *Flimflam*, eclectic flame pattern jacquard, col. 1 Rouge d’Anatolie.

COMPLETE RANGE: 4 COLOURS

Cuscino *Flimflam*, eclettico jacquard fiammato, col. 1 Rouge d’Anatolie.

GAMMA COMPLETA: 4 COLORI

42–43

Armchair *Be Bop A Lula*, lively jacquard with palm trees, col. 9 Cactus.

COMPLETE RANGE: 11 COLOURS

Curtain *Buonfresco*, textured wool satin, col. 12 Kiwi.

COMPLETE RANGE: 14 COLOURS

Poltrona *Be Bop A Lula*, jacquard vivace con fantasia a palme, col. 9 Cactus.

GAMMA COMPLETA: 11 COLORI

Tenda *Buonfresco*, raso di lana materico, col. 12 Kiwi.

GAMMA COMPLETA: 14 COLORI

44–45

Curtain *Untitled*, textured jacquard with abstract pattern, col. 1 Black Silver over Ivory.

COMPLETE RANGE: 3 COLOURS

Curtain *Fandango*, contemporany jacquard with lively geometries, col. 2 Jaune d’Or.

COMPLETE RANGE: 5 COLOURS

Tenda *Untitled*, jacquard materico con disegno astratto, col. 1 Black Silver over Ivory.

GAMMA COMPLETA: 3 COLORI

Tenda *Fandango*, jacquard contemporaneo a geometrie vivaci, col. 2 Jaune d’Or.

GAMMA COMPLETA: 5 COLORI

47

Armchairs *Chapeau*, sartorial woven felt, col. 10, 13, 9, 12, 1, 2, 17, 7.

COMPLETE RANGE: 17 COLOURS

Poltrone *Chapeau*, panno di lana sartoriale, col. 10, 13, 9, 12, 1, 2, 17, 7.

GAMMA COMPLETA: 17 COLORI

50–51

Chair *Amoir Fou*, fire-retardant moiré fabric, col. 28 Pétale.

COMPLETE RANGE: 30 COLOURS

Curtain *Be Bop A Lula*, lively jacquard with palm trees, col. 6 Ninfea.

COMPLETE RANGE: 11 COLOURS

Sedia *Amoir fou*, tessuto moiré ignifugo, col. 28 Pétale.

GAMMA COMPLETA: 30 COLORI

Tenda *Be Bop A Lula*, jacquard vivace con fantasia a palme, col. 6 Ninfea.

GAMMA COMPLETA: 11 COLORI

Available as wallcovering/Disponibile in versione rivestimentomurale (Amoir Fou Wall)

53

Cushions *Flimflam*, eclectic flame pattern jacquard, col. 4 Désert du Sinaï.

COMPLETE RANGE: 4 COLOURS

Cuscini *Flimflam*, eclettico jacquard fiammato, col. 4 Désert du Sinaï.

GAMMA COMPLETA: 4 COLORI

55

Curtain *No Excuses*, extra-wide wool woven felt, col. 4 Zucca.

COMPLETE RANGE: 11 COLOURS

Tenda *No Excuses*, panno di lana in grande altezza, col. 4 Zucca.

GAMMA COMPLETA: 11 COLORI

Headquarters
& Showrooms

DEDAR HEADQUARTER
Via della Resistenza, 3
22070 Appiano Gentile
+39 031 2287 511
info@dedar.com

DEDAR MILANO
Via Fiori Chiari, 18
20121 Milano
+39 02 8058 1823
showroom@dedar.com

DEDAR FRANCE
20, Rue Bonaparte
75006 Paris
+33 1 56811098 / showroom
showroomFR@dedar.com
+33 1 56811095 / bureau
infoFR@dedar.com

DEDAR RUSSIA
3, Bolshoy Nikolopeskovsky
pereulok 119002 Moscow
+7 499 2414202
dedar.russia@dedar.com

DEDAR UK
Unit C7, Design Centre East
Ground Floor, Chelsea
Harbour, Design Centre
London sw10 0xf
+44 207 35 199 39
showroomUK@dedar.com

DEDAR USA
330 Fairfield Avenue
Stamford, CT
06902 USA
+1 203 914 1727
info.us@dedar.com

DEDAR NEW YORK
D&D Building Suite 1009
979 3rd Avenue
New York, NY
10022 USA
+1 646-870-0799
showroomny@dedar.com

DEDAR MIDDLE EAST
Dafza 3W Office 213
PO BOX 54293 Dubai,
U.A.E.
+9714 2997196
info@dedarme.ae

DEDAR GERMANY
infoDE@dedar.com

DEDAR SPAIN
David Calderon
Calle Alcalà, 93 2ºG
28009 Madrid
+34 900 936 944
+34 647967845
spain@dedar.com

For more information,
visit the store locator
at dedar.com

Public Relations

ITALY
Conseil
+39 02 6702963
conseilrp@conseilrp.com

FRANCE
Agence Lorraine
de Boisanger Paris
+33 0147459000
agence@ldeboisanger.com

U.S.A.
Head & Hand
+1 6467322240
katharina@
headandhandpr.com

OTHER COUNTRIES
Dedar – Stefano Locci
+39 031 2287504
marketing@dedar.com

www.dedar.com
@dedarmilano

Photography
by Andrea Ferrari
Art direction by
Stefanie Barth
& Carina Frey
Styling by Conti|
Marchetti studio



DEDAR
MILANO